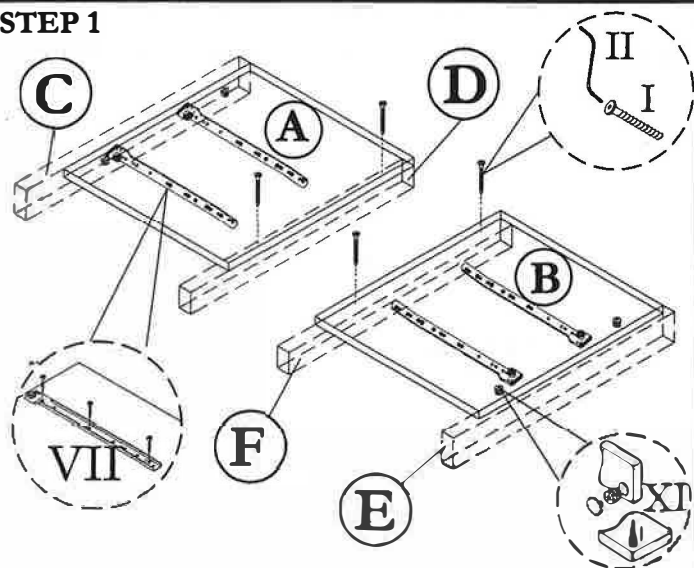


ASSEMBLY INSTRUCTION
MODEL : 5087 / SIDE TABLE

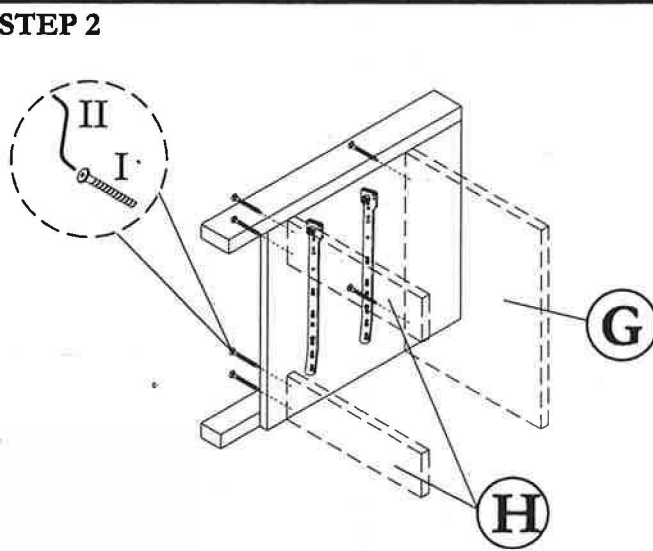
pako^{world} 123-000164

Before you begin, please follow assembly instruction carefully.
 Then follow them step by step.

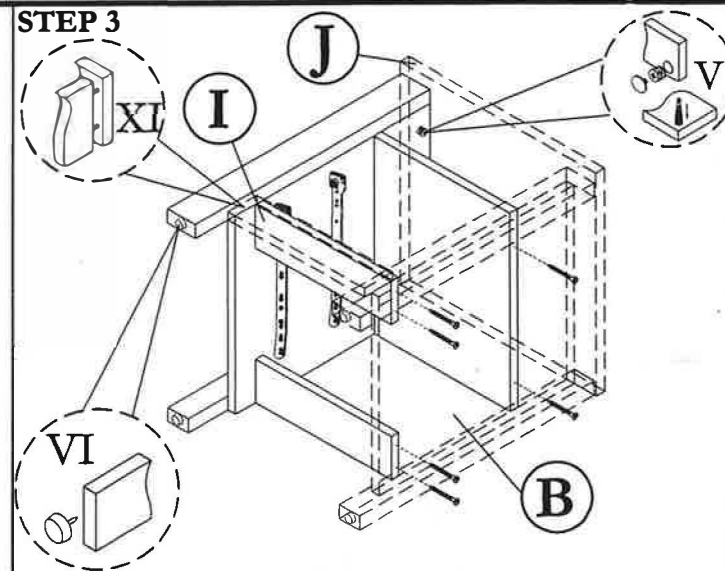
STEP 1



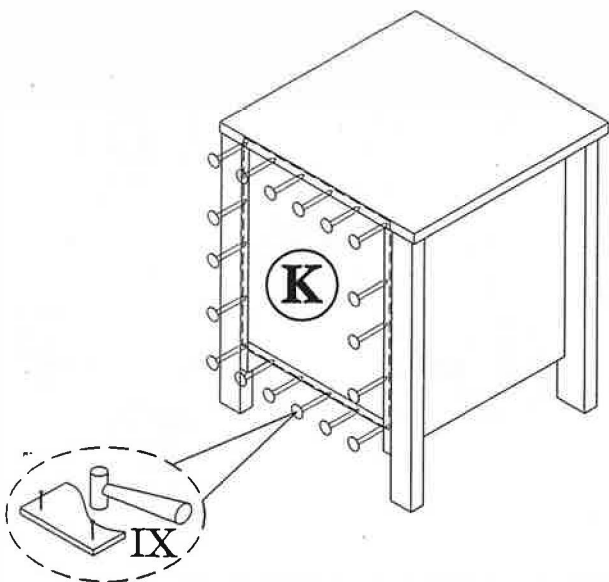
STEP 2



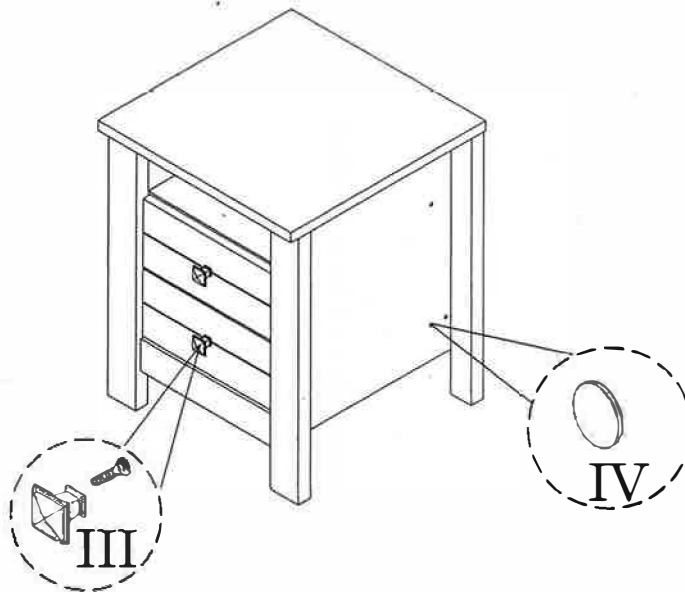
STEP 3



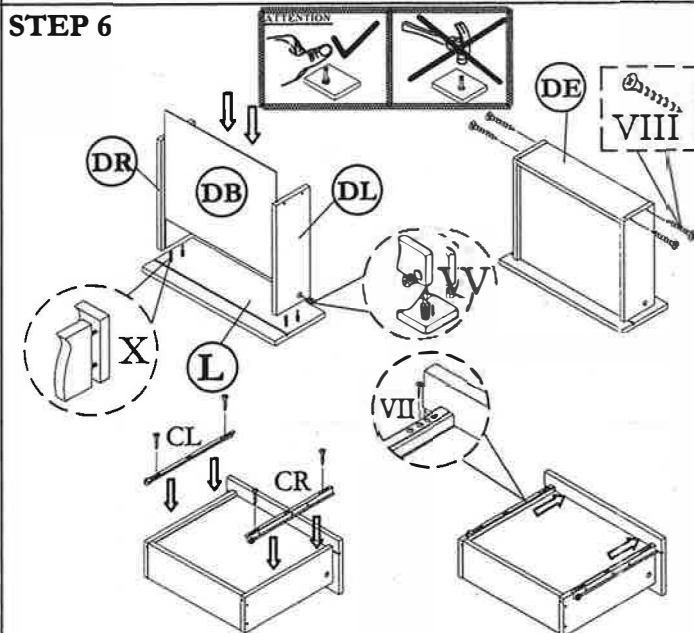
STEP 4



STEP 5



STEP 6



HARDWARE LIST			
NO	DESCRIPTION		QTY
I	JCBCW SCREW M6.3 x 50		16pcs
II	M4 ALLEN KEY		1pc
III	HANDLE & SCREW M4 x 22		2sets

IV	STICKER		12pcs
V	Q-FIT		8sets
VI	PVC NAIL WITH PIN		4pcs
VII	12" DRAWER SLIDER & SCREW M3.5 x 12		2sets
VIII	M8 X 32 CHIPBOARD SCREW		8pcs

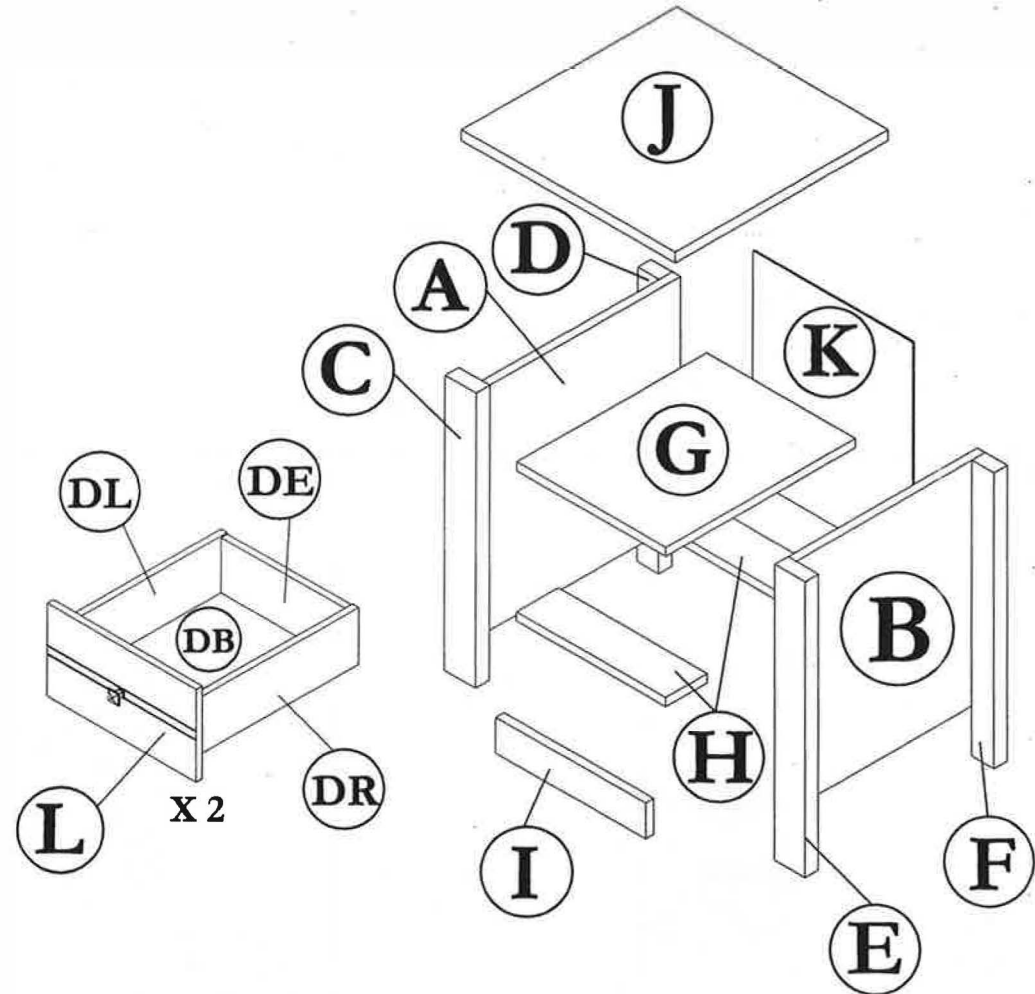
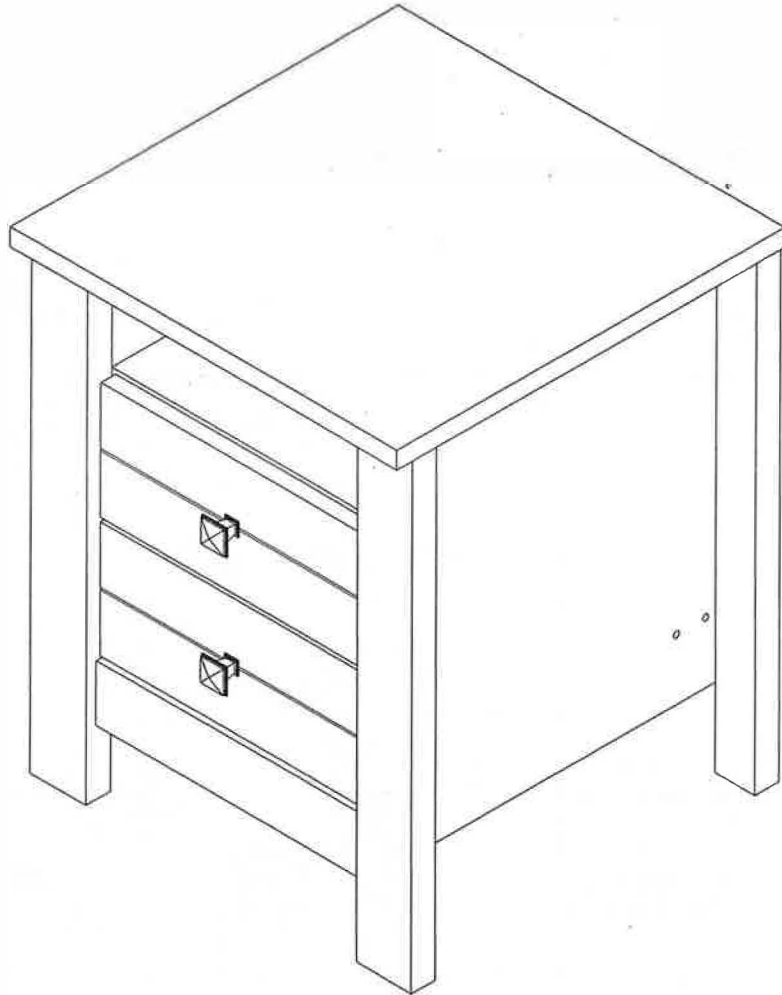
IX	NAIL		20pcs
X	M8 x 30 WOOD DOWEL		8pcs
XI	Q-FIT (small)		4sets

CAUTION:

To clean use soft, dry cloth. Do not use detergent or chemicals
Avoid contact with water and direct sunlight.
To be assembled on a soft, dry, clean and smooth surface.

ORDERING REPAIR PARTS

In order to obtain smooth and rapid service when ordering repair parts,
please give full attention to the following of PART NUMBER.



COMPLETE SET

NO	DESCRIPTION	QTY
A	LEFT SIDE	01
B	RIGHT SIDE	01
C	LEFT SIDE WRAPPING (Front)	01
D	LEFT SIDE WRAPPING (Back)	01
E	RIGHT SIDE WRAPPING (Front)	01
F	RIGHT SIDE WRAPPING (Back)	01

NO	DESCRIPTION	QTY
G	CENTRE SHELF	01
H	LOWER SHELF	02
I	LEG	01
J	TOP	01
K	BACK	01
L	DRAWER FACE	02

NO	DESCRIPTION	QTY
DL	DRAWER SIDE (Left)	02
DR	DRAWER SIDE (Right)	02
DB	DRAWER BASE	02
DE	DRAWER END	02