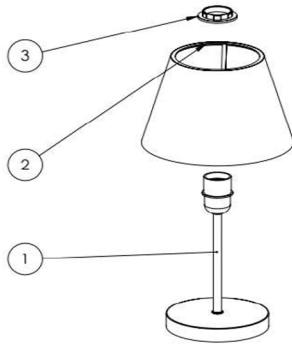


ASSEMBLY INSTRUCTION



Packaging content;

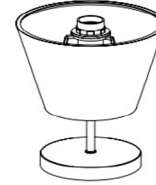
- | | | |
|---|-----------------------------------|---------|
| 1 | Lower body (plate and socket set) | 1 Piece |
| 2 | lampshade head | 1 Piece |
| 3 | Socket nut | 1 Piece |

1

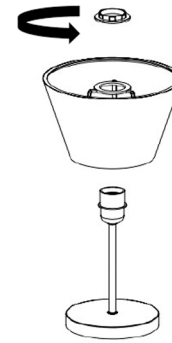
Assembly Instruction;

202-000040

- 1 Please confirm with the quantity and content information of the parts coming out of the product packaging.
- 2 Header "2" comes assembled upside down from the package.

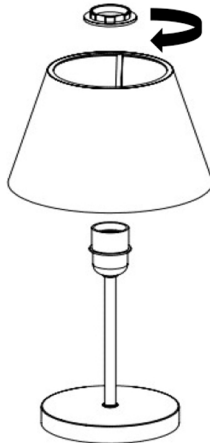


- 3 Unscrew the socket nut "3" by turning it counterclockwise.



2

- 4 Turn the part numbered "2" 180 degrees and assemble it to the part numbered "1". After installing the "2" part correctly, turn the part "3" clockwise.



3

- 5 Insert the bulb and prepare it for use by fixing the plug to the 220 V Luk socket inlet.
- 6 To illuminate, turn the switch on the cable to the "ON" position.



4

