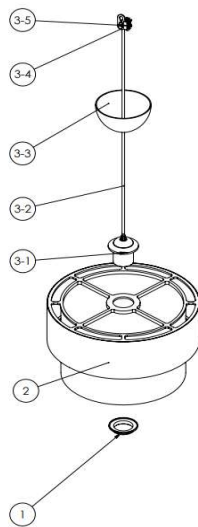


ASSEMBLY INSTRUCTION



Packaging content;

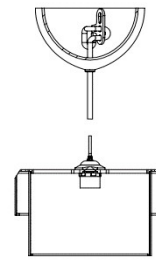
- 1 Socket Nut
- 2 Title
- 3 lamp fixture
- 3-1 Hear (E27)
- 3-2 socket cord
- 3-3 rosé cover
- 3-4 hanger plastic
- 3-5 terminal

- 1 Piece
- 1 Piece
- 1 Piece
- 1 Piece
- 1 Piece
- 1 Piece
- 1 Piece
- 1 Piece

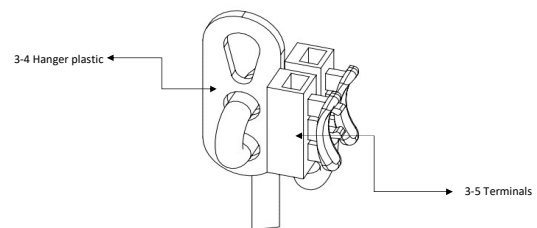
1

Assembly Instruction;

- 1) Please confirm with the quantity and content information of the parts coming out of the product packaging. Track "1", no. "3" is in a group with the piece. Take it out of the bag.
- 2) Unscrew the "1" part.
- 3) Take the part no. "2" out of its package and assemble it in accordance with the socket no. "3-1" and put the part no. "1" secure with the socket nut.

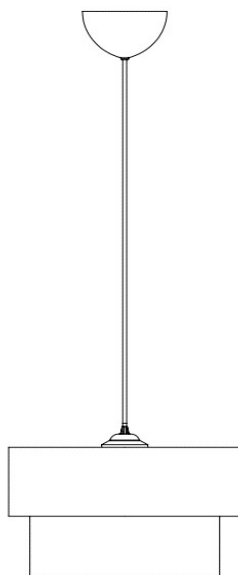


- 4) Place the part of the suspended pendant in the ceiling connection to the hook on your ceiling. Make the cable connections to the terminal (part 3-5) located on the hanger plastic (part 3-4) with qualified personnel. Make sure there is no electricity in the connected cables.



2

- 5) Plug your suitable lighting equipment into the socket. Your product is ready to use.



3



4

