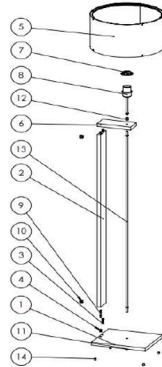


# ASSEMBLY INSTRUCTION



## Ambalaj içeriği;

1 Wooden table (bottom)

2 wooden pole

3 centering pin

4 dowel

5 Lampshade head (De-mounted)

5-1 Subframe (Disassembled)

5-2 Upper frame (Disassembled)

5-3 Lampshade head cover (De-assembled)

6 Wooden tray (top)

7 socket nut

8 holder and raising bar

9 lock bolt

10 locking nut

11 elevation nut

12 socket adapter

13 lamp post

14 plastic feet

1 Piece

1 Piece

2 Pieces

2 Pieces

1 Piece

2 Pieces

2 Pieces

1 Piece

1 Piece

1 Piece

2 Pieces

2 Pieces

1 Piece

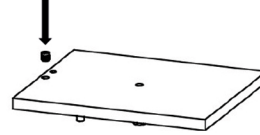
1 Piece

4 Pieces

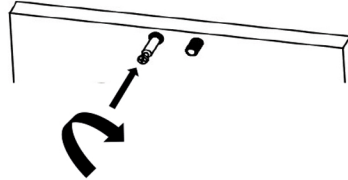
1

## Assembly Instruction;

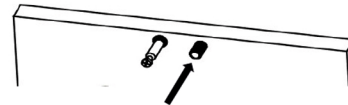
- 1) Please confirm with the number and content information of the parts coming out of the product packaging.
- 2) Place the dowels numbered "4" on the part numbered "1" and "6". (May require light force)



- 3) Fix the locking bolt numbered "11" with the help of screwdriver and drill to the fixed parts numbered "4".

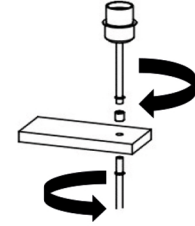


- 4) Place the parts numbered "3" in the appropriate places on the part numbered "2". (No force required)

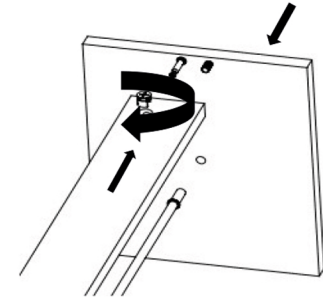


2

- 5) Passing the "8" part through the "12" part and the "12" part through the hole in the "6" part. Fix it with piece 13.



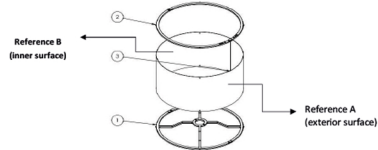
- 6) Assemble the assembled upper group "6" to the lower part "1" and "2". Place the nut numbered "11" on the screw part at the bottom with the help of a wrench clockwise.



- 7) Insert the piece numbered "8" into the hole in the center of the piece numbered 6 with the socket facing up.

3

- 8) Let's assemble the lampshade cap according to the following explanation.



With the "Reference A" surface of part "5-3" facing outwards, combine as in the pictures.

Figure A



After bringing the piece "5-3" to the stage in "figure A", the ring made of the cap is locked with the internal locking mechanism.

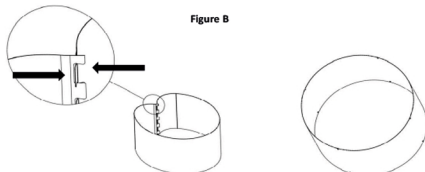
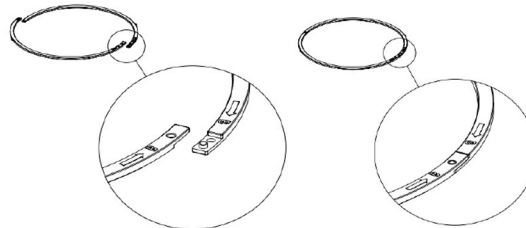


Figure B

4

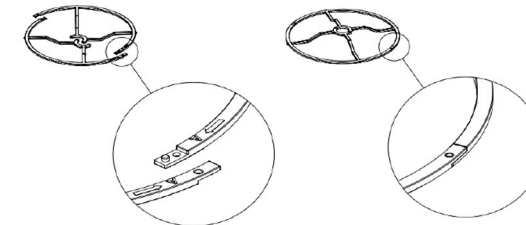
The part "5-2" is locked from the double-sided locking mechanism as in "Figure C".

Figure C



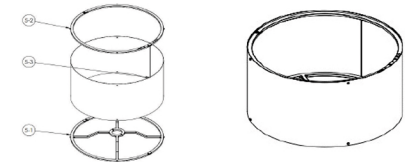
The part "5-3" is locked from the double-sided locking mechanism as in "Figure D".

Figure D

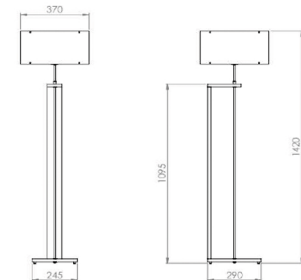


5

The assembled "5-2" and "5-1" parts are mounted through the "5-3" holes.



After the "5" part is mounted to the "8" part, the "7" part is mounted by screwing the "8" part.



- 9) Insert the bulb and fix the plug to the 220 V socket inlet and prepare it for use.
- 10) To illuminate, turn the switch on the cable to the "ON" position.

6